

# Control Software for Immunity Tests - CoreLab

## Datasheet



### Introduction

CoreLab is designed to remote control 3ctest's simulators or generators, e.g. DO 160 series in accordance to RTCA DO-160G and MIL-STD-461G, TPS series in accordance with US military standards, PFS series in accordance with China's military standards, and CCS series, CWS series, CMS/CMM, ADS, MFS series etc. in accordance with IEC/EN standards. It supports Ethernet communication mode, automatic test sequencing and scheduling, providing an easy one-key remote control of complicated tests.

### Characteristics

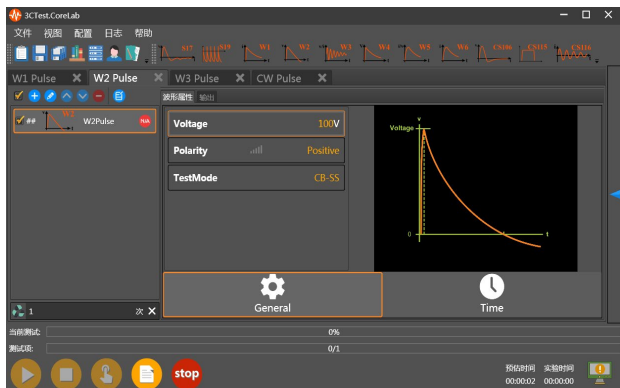
- > Compatible with Windows XP/7/8/10 OS;
- > Supporting Ethernet RJ45 and serial port communication port;
- > Supporting a wide range of 3ctest equipment and equipped with corresponding international standards;
- > Powerful test sequence function and one-key remote control;
- > Report sample can be defined by users;
- > Emergency stop with one key, safety operation;

### Highlights

- > Multi-window graphical UI;
- > Test sequencing and scheduling, one-key remote control;
- > Support of report exporting;
- > Intuitive interface for devices configuration and management, and visualized devices connection status;
- > Saving and management of waveforms;
- > Support of upgrade of standard and supportive devices;

## Detailed Introduction

■ Multi-window graphical UI:



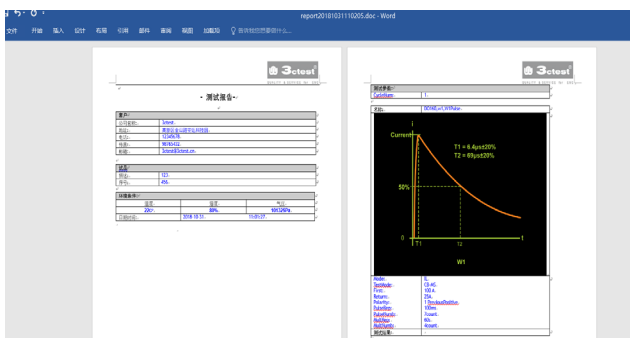
Multiple test editing windows can be opened simultaneously, waveform parameters are easy to understand through the display of waveform image.

■ Test sequencing and scheduling, one-key remote control:



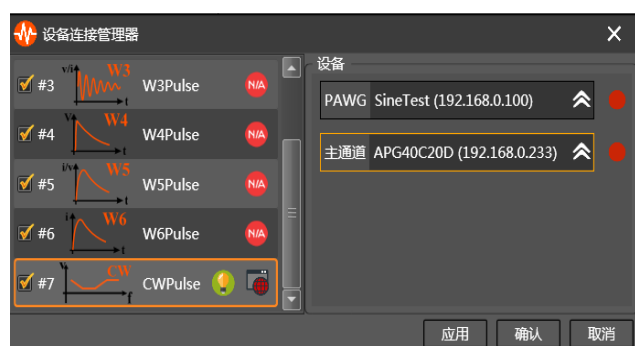
Multiple test steps can be scheduled to facilitate users to conduct a series of tests on the DUT at one time, controlled with one-click. Test parameters can also be scheduled to achieve iterative testing of parameters, avoiding frequent parameter setting.

■ Support of report exporting:



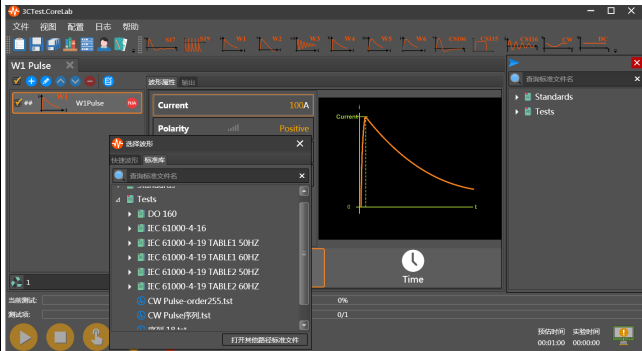
Reports can be automatically generated with ready templates or templates modified by the user at the end of the test. Users can also generate the report during the test to record certain test details.

■ Intuitive interface for devices configuration and management, and visualized devices connection status:



Equipment connections and management are shown in diagram in an independent window.

**Saving and management of waveforms:**



CoreLab is capable of saving and managing standard waveforms and user-defined waveforms. Saved files can be renamed and categorized to facilitate data management and future use.

**List of Supported Standard Library**

> DO160 22.01 PIN	> DO160 S19
> DO160 22.02 Single Stroke	> IEC 61000-4-2
> DO160 22.03 Multiple Stroke	> IEC 61000-4-4
> DO160 22.04 Multiple Burst	> IEC 61000-4-5
> DO160 S17	> IEC 61000-4-8
> DO160-E	> IEC 61000-4-9
> GJB 181-86	> IEC 61000-4-10
> GJB 181A 2003	> IEC 61000-4-11
> GJB 298 1987	> IEC 61000-4-12
> GJB 735.11 1990	> IEC 61000-4-18
> IEC 61000-4-16	> IEC 61000-4-29
> IEC 61000-4-19	> IEC 61000-4-34
> JEDEC JESD22 A114	> IEC 61730-2-2016
> JEDEC JESD22 A115	
> MIL CS106	
> MIL CS115	
> MIL CS116	
> MIL-STD-704	

### List of Supported Standard Library

ADS 500	ETS 160MB
CCS 500	ISG 1800
CCS 600	LSS 160SM6
CDS 300	LSS 160SS
CMS 500&CMM 500	MFS 400/1200
CWS 60G	MFS xxAP
CWS 120G	MFS 1000AS1.5
CWS 600/800/1000	PFS 0505D
CWS 600/800/1000G	PFS 0610D
CWS 800N/1000N	PFS 181
CWS 800GN/1000GN	PFS 22xx S/SD/D/SVD
CWS 1500N1 & CWS 1500N2	PFS 2216SV-12
CWS 2000N1 & CWS 2000N2	PFS 3016D
CWS 600CT	PFS 3830T3
CWS 600T	PFS xxT1
DCP 1800	PVSG 2500
DOS-CS116	PVSG 3000
DOS 300	RWS 600
DOS 100MF	TPS-CS106
DOS 400F	TPS-CS115
DMS 200A	TPS-160S17
DMS 200B	VDG 298
EDS 10IC	VSG 335
EDS 20H	VSS 298
EDS 30S	
EFT 400S/500S	
EFT 500	
EFT xxT	



## **SUZHOU 3CTEST ELECTRONIC CO., LTD.**

Add.: No. 99 E'meishan Road, SND, Suzhou, Jiangsu Province, China

Tel: +86 (0)512 6807 7192      Fax: +86-512-68079795

Sales Email: [globalsales@3ctest.cn](mailto:globalsales@3ctest.cn)      Service Email: [service@3ctest.cn](mailto:service@3ctest.cn)

[www.3c-test.com](http://www.3c-test.com)